

# **Omatalo Oy, Finland - in wooden residential construction**



# Omatalo Oy in brief

**omatalo**

## Business idea

Develop and promote Nordic wooden housing in North-West Europe

## Business areas

Single family houses for consumers  
Area development  
Leisure time housing

## Key figures

Turnover	30 M€
Capacity	2.000 houses/year
Factories <sup>1</sup>	
Employees	120
Total production	30.000 houses



# Business areas

**omatalo**

**Consumer sales**



**Architect planned models in house catalogue, more than 600 houses.  
Customer based modifications 80 %.**

**Project development**



**Close urban building near to growth centres.**

**Leisure time housing**



**Range of leisure time housing both for consumers and developments.**

**House range from Budget class to High class**

## Brand in Finland:



**Main market areas:  
Finland, Estonia,  
Latvia, Russia,  
Lithuania, Poland,  
Czech Republic**

**Brand in Russia:**

**FINNDOMO**

# Omatalo production

omatalo



**Sonkajärvi 23.000 m<sup>2</sup>**

**- founded 1939**





# Omatalo production

Sonkajärvi 23.000 m<sup>2</sup>  
- founded 1939

**omatalo**



# Technologies used for 1-2 storey house **omatalo**



<b>Small panel system</b>	<b>Wall-size panel system</b>
<b>Panel size 30-180 x 300 cm</b>	<b>Panel size max 1150 x 300 cm</b>
<b>Automized industrial production</b>	<b>Semi-automized industrial production</b> <b>Individual custom made houses</b>
<b><u>Suitable for long distance transports to export markets</u></b>	<b>Not suitable for long transport due to height</b>
<b>Turn-key readiness 60-90 days</b>	<b>Turn key readiness 60-90 days</b>



# Popularity of prefabricated wooden houses in North Europe

- **Extraordinary thermal insulation in timber constructions**
- **Ecological material**
- **Qualitative manufacturing in indoor industrial premises**
- **Minimized assembly time on building**
- **Total economical efficiency**





## Sonkajärvi factory in Finland

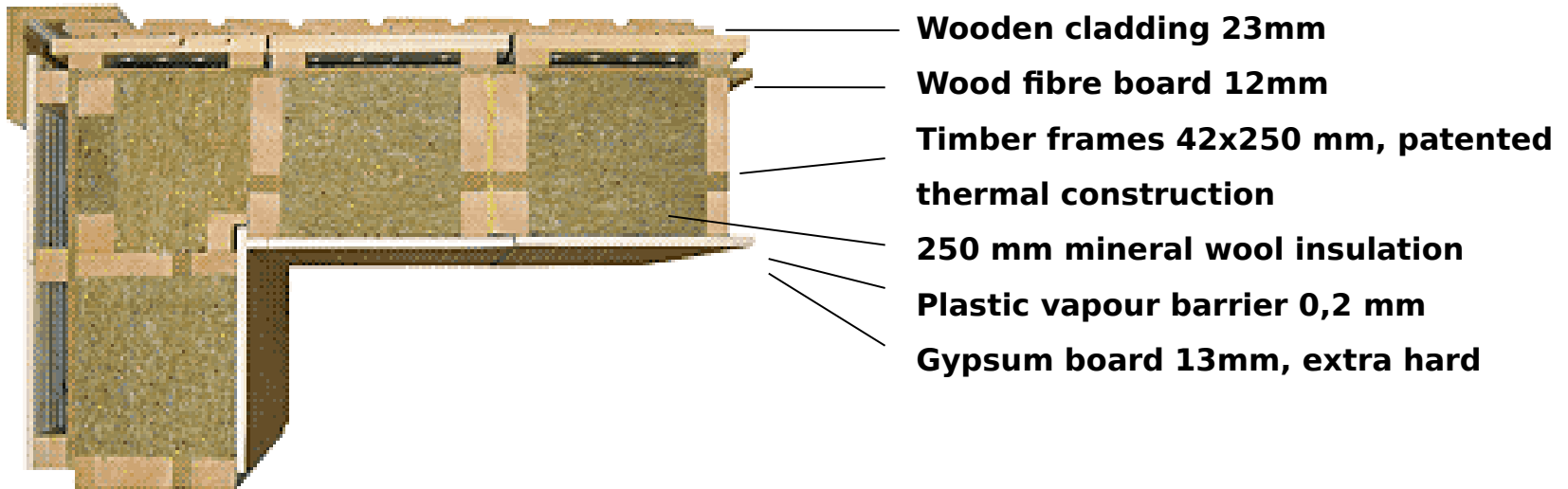


### Production line for small panels

- **Capacity: 2 000 houses annually / 1-shift**
- **Deliveries: 5-15 houses per day**
- **Employees: 120 persons**



## Timber wall panel construction patented by Omatalo



## Transport



**Domestic and export markets**  
**1-3 trucks / house**



**Export markets**  
**3-6 containers / house**

## Time for erection and assembly of a single-family



■ **Erection**  
**1-2 days / 3-4**  
**persons**



■ **Assembly**  
**7-14 days / 3-4**  
**persons**



■ **Turn-key readiness**  
**60-90 days / 4**  
**persons**



## External pictures



## Internal pictures



# Area development process

omatalo

## Area development



## Partnership

### Partner

- Identifies investors, agrees upon attractive land development projects
- Negotiates with local authorities
- Arranges network of local subcontractors (foundation, erection, construction) in co-operation with Omatalo
- Carries out sales activities

### Omatalo

- Plans residential area and housemodels
- Training of assembly teams, supervision
- Supplies drawings and instructions
- Supplies house kit; walls, windows, doors and roofing

### Partner

- Erects the house as instructed in co-operation with Finndomo
- Finalizes the construction work
- Carries out gardening work



# Examples of Area development projects **omatalo**

Sundsberg area, Finland. 350 houses.



# Examples of Area development projects **omatalo**

St.Petersburg, Russia. 12 houses.





# Examples of Area development projects **omatalo**

Tallinn, Estonia. 145 houses.





# Examples of Area development projects **omatalo**

Kauklahti area, Finland. 30 houses.



# **Historia Firmy Omatalo Oy**

## Typowa architektura lat 40.

omatalo



Puutalo Oy:n tyyppitalo Rauhakoto Helsingin lähistöllä. (Foto: Pietinen)



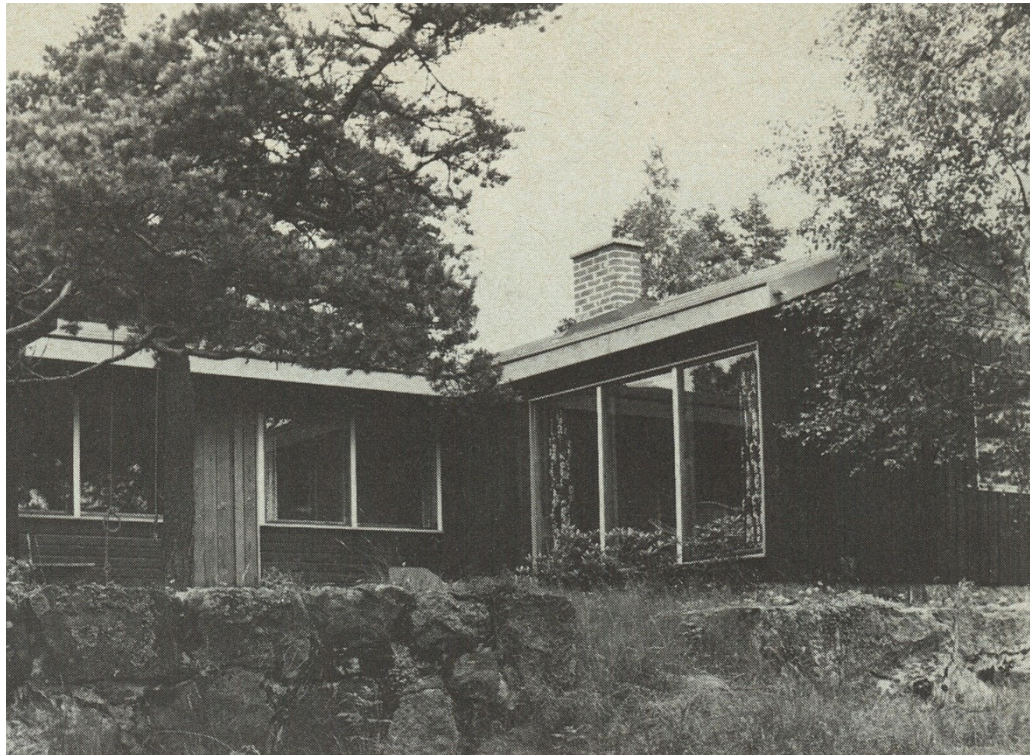
## Typowa architektura lat 40-50.

omatalo



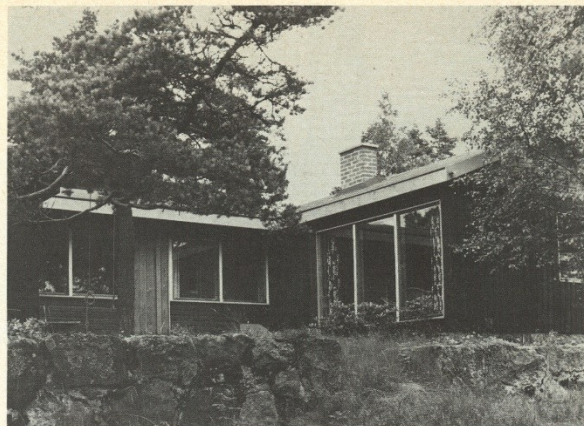
Puutalo Oy:n 40-luvun suosituin tyyppitalo Metsäkoto Jyväskylässä. Tyyppiä muunnettiin 40-luvun aikana useaan kertaan. Kyseinen malli on Toivo Jäntin ja Jorma Järven suunnittelema. (Foto: Puutalo Oy)

# Typowa architektura lat 50-60. **omatalo**





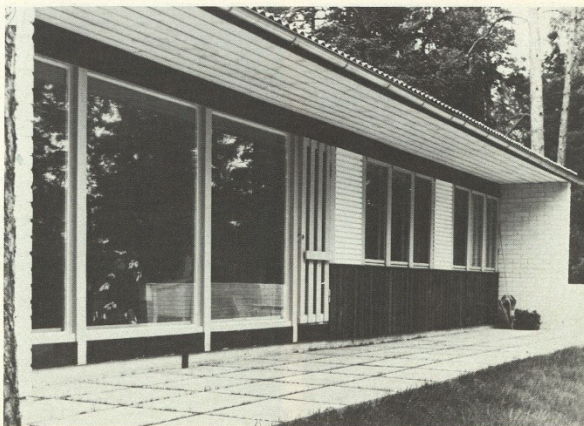
**Przykładowa  
architektura  
lat 60-70.**



*Omatalo 1950-luvulta*



*Omatalo, 1960-luvun vientimenesitys  
Saksan Liittotasavallassa.*



*Omatalo, 1960-luvun suosittu tyyppi kotimaassa.*

**omatalo**



# Warszawa- historia Omatalo Oy

omatalo



## **Najlepsze rozwiązania technologiczne pozwalające uzyskać najwyższą klasę energooszczędności**

- Technologia konstrukcji ścian zewnętrznych**
- Instalacja okien i drzwi na stołach montażowych w fabryce**
- Wentylacja mechaniczna z odzyskiem ciepła (rekuperacja)**
- Ogrzewanie płaszczyznowe**
- Izolacja ścian zewnętrznych 250 mm, podłogi 200 mm i konstrukcji dachowej 450 mm**